

Kansas City Ballet Visitors & KCBS Students and Families,

Here at the Bolender Center we have been working closely with our security officers to ensure the safety of our students and families in the parking lot. **Below is the detailed explanation of the drop-off and pick-up processes, and a note about the gravel parking.** Johnson County parents, while this may not affect you on a day-to-day basis, it is important for you to know for rehearsals or make-up classes your student may attend at Bolender Center.

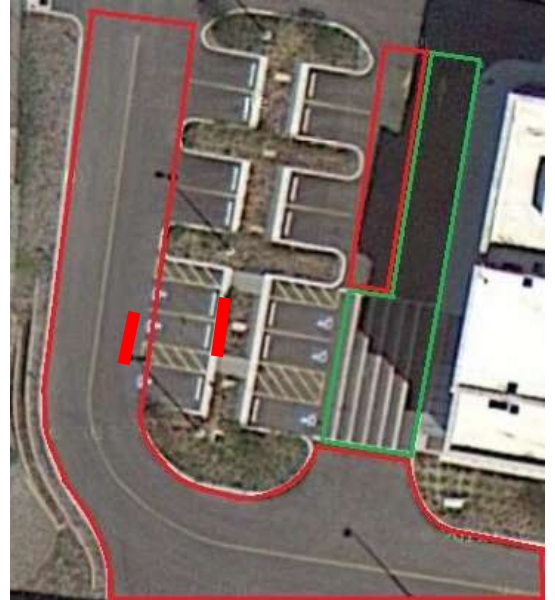
Important Reminders

- Please respect our security officers and any directions they may give you – they are here for the safety of all!
- Please be extra courteous at our busiest times: Monday through Thursday 3:30 PM-6:00 PM, and Saturdays 8:30 AM-11:30 AM

Drop-Off Process

Students may only be dropped off at the curb in front of the building and in the striped zone (marked in **green**).

- Do not drop off students in any of the areas marked in **red**– these are roads/driving areas
- Students should exit the vehicle on the curbside
- Vehicles should pull up as far as possible in the **green** area and pull away promptly once their student has exited
- Alternatively, please find a parking spot and escort your student into the building



Pick-Up Process

It is preferred that you find a parking spot to wait for your child. If you wish to wait in the pick-up line, the only designated areas to wait are marked in **orange** on the map.

- Do not wait in any other areas - it is imperative that the handicapped accessible areas in front of the building and the driveway to both the IRS and the Liberty Lofts are not blocked (thank you for being respectful of our neighbors!)
- If those designated areas are all full, please find a parking spot

Once you know your child is ready to be picked up, you can do so in any of the green areas on the map.

~ Additional parking spaces are available along the fence.

Gravel Parking

Please be aware the gravel area underneath Pershing Road is designated for staff, company dancers, teachers and accompanists only. Specific events may allow for parking in this area. Signage will be available to indicate if parking is allowed.

