

Dear Academy Parents,

Here at the Bolender Center we have been working closely with our security officers to ensure the safety of our students and families in the parking lot. **Below you will find important reminders, detailed explanation of the drop-off and pick-up processes, and a note about the gravel parking.** Johnson County parents, while this may not affect you on a day-to-day basis, it is important for you to know for rehearsals or make-up classes your student may attend at Bolender Center.

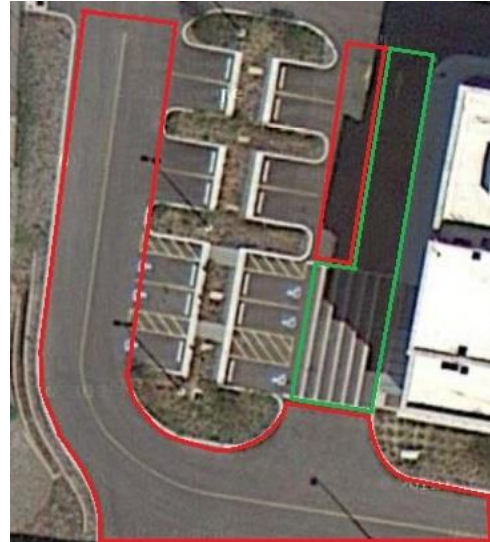
Important Reminders

- Please respect our security officers and any directions they may give you – they are here for the safety of your child!
- Please be extra vigilant at our busiest times: Monday through Thursday 3:30 PM-6:00 PM, and Saturdays 8:30 AM-11:30 AM

Drop-Off Process

Students may only be dropped off at the curb in front of the building and in the striped zone (marked in green).

- Do not drop off students in any of the areas marked in red– these are roads/driving areas
- Students should exit the vehicle on the curbside
- Vehicles should pull up as far as possible in the green area and pull away promptly once their student has exited
- Alternatively, please find a parking spot and escort your student into the building

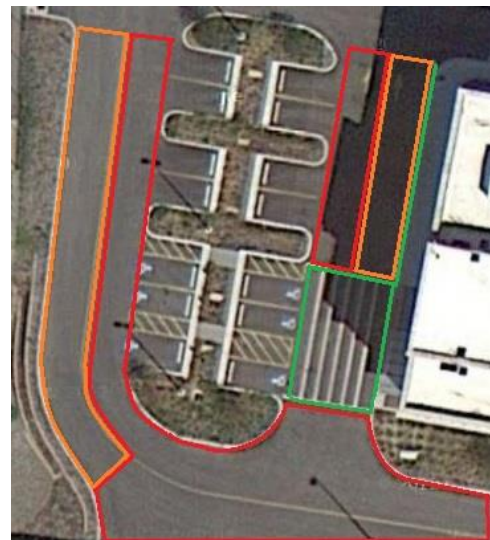


Pick-Up Process

It is preferred that you find a parking spot to wait for your child. If you wish to wait in the pick-up line, the only designated areas to wait are marked in orange on the map.

- Do not wait in any other areas - it is imperative that the handicapped accessible areas in front of the building and the driveway to both the IRS and the Liberty Lofts are not blocked (thank you for being respectful of our neighbors!)
- If those designated areas are all full, please find a parking spot

Once you know your child is ready to be picked up, you can do so in any of the green areas on the map.



Gravel Parking

Please be aware that the gravel area underneath Pershing Road is designated for staff, company dancers, teachers and pianists. Only in the event that every single parking space is taken, including all of those along the fence, may the gravel area be used as overflow for parents and students. In that

instance, please do not block the two low spots along the curb that allow vehicles to exit and enter the parking area.



BC DROP OFF MAP



BC PICK UP MAP